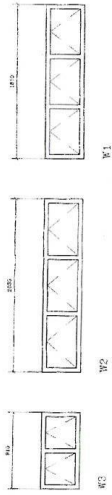


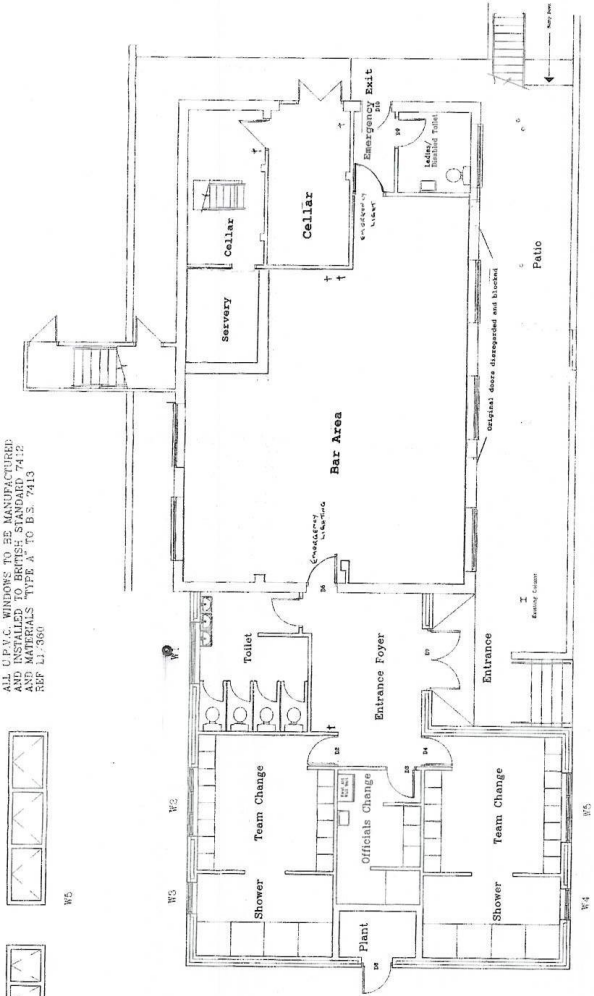
LINTOL TYPE LI/HB 100
 LENGTH 1200mm LONG
 FOR WINDOWS W3 & W4

 LINTOL TYPE LI/HB 100
 LENGTH 2400mm LONG
 FOR WINDOWS W2 & W5

 LINTOL TYPE LI/HB 100
 LENGTH 2140mm LONG
 FOR WINDOWS W1



ALL UPVC WINDOWS TO BE MANUFACTURED
 AND INSTALLED TO BRITISH STANDARD 7412
 TYPE A TO B.S. 7413
 REF B1/3850



Plan



 Building Regulations Authority
 100, Victoria Road, Exeter, Devon, EX1 1JH
 Tel: 01392 262200
 Fax: 01392 262201
 Email: enquiries@br.a.gov.uk
 Website: www.br.a.gov.uk
 Blackwood Cricket Club
 Proposed New Changing
 Facilities
 Exeter, Devon
 Window Details
 0286
 A13

