



## **EDUCATION AND SOCIAL SERVICES SCRUTINY COMMITTEE - 30<sup>TH</sup> JANUARY 2024**

**SUBJECT: KEY STAGE 4 OUTCOMES 2023**

**REPORT BY: DEBBIE HARTEVELD, MANAGING DIRECTOR, EAS.  
TO BE DELIVERED BY EDWARD PRYCE,  
ASSISTANT DIRECTOR – POLICY AND STRATEGY**

---

### **1. PURPOSE OF REPORT**

- 1.1 This report provides members with final outcome data for Secondary schools within the Local Authority for 2022-2023 (Summer 2023).

### **2. SUMMARY**

- 2.1 This year, for the first time since 2019, the Welsh Government are producing Key Stage 4 (KS4) All Wales Core Data Sets (AWCDS) at individual school level. Each of the last four years used essentially different methods for determining grades, so none are directly comparable. In 2023 national outcomes are lower than 2022, 2021 and 2020, but not as low as 2019. Provisional outcomes were available to schools, LAs and consortia in Provisional form in mid-November 2023 (via Data Exchange Wales (DEWi)). These then contribute to a school level checking process, so any errors could be addressed, before final versions were published on 20 December 2023. This report uses the final versions of outcome data for Caerphilly schools but anonymised, as at the time of writing the data has not been published by Welsh Government.
- 2.2 Please note that this data has been used in provisional form by both LA and EAS colleagues, to prioritise support at individual school level, from the start of Autumn Term 2023

### **3. RECOMMENDATIONS**

- 3.1 Members are asked to scrutinise the contents of the report and ask questions and offer views about overall school outcomes.

### **4. REASONS FOR THE RECOMMENDATIONS**

- 4.1 The Local Authority has a statutory responsibility for monitoring educational outcomes

within its schools.

## **5. THE REPORT**

### **Background and Context**

- 5.1 This year, for the first time since 2019, the Welsh Government are producing Key Stage 4 All Wales Core Data Sets (AWCDS) at individual school level. Each of the last four years used essentially different methods for determining grades, so none are directly comparable. In 2023 national outcomes are lower than 2022, 2021 and 2020, but not as low as 2019.
- 5.2 Provisional outcomes were available to schools, LAs and consortia in Provisional form in mid-November 2023 (via Data Exchange Wales (DEWi)). These were then used to contribute to a school level checking process, so any errors could be addressed, before final versions were published on 20 December 2023. This report uses the final versions. Please note however that Welsh Government intention was to publish this data to their 'MyLocalSchool' site in early January. At the time this report was written this had been delayed.
- 5.3 Please note that whilst this final set of data has just become available, both LA and EAS colleagues have used provisional data and data provided by the school, from the start of Autumn Term 2023, to prioritise support at individual school level. This information is used to support school's own self-evaluation activity through LA led professional discussions.

### **Welsh Government published measures for 2023**

- 5.4 These include the following points-based measures:
- The Capped 9 measure
  - Literacy measure (best of Language / Literature)
  - Numeracy measure (best of mathematics / numeracy)
  - Science measure (best of science)
  - Welsh Baccalaureate Skills Challenge Certificate measure
- 5.5 In addition to the above 'points based' measures the percentage of learners achieving 5 or more A\*-A and percentage of learners achieving No Qualifications are also included.
- 5.6 As well as comparisons of All Pupils, comparisons are also made Male / Female and FSM / non-FSM for each of the indicators, but only Capped 9 comparisons are included in this report at LA level.
- 5.7 In terms of analysis the two main comparisons are the Welsh Government line of modelled outcomes, and a comparison with a 'family' of similar schools.

### **Families**

- 5.8 Schools face different challenges based on their context. The AWCDS contains comparative outcomes against similar schools – known as 'Families'. Families (of 9-10 schools) have been created by grouping on size and linguistic delivery and then ordering schools according to the values of an index of 'challenge', calculated as follows. Please note that a three-year average of data from PLASC 2021-2023 is used.

- 50% x the proportion of pupils of statutory school age eligible for Free School Meals (FSM)
- 30% x the proportion of pupils of statutory school age who live in an area classed as in the 20% most deprived parts of Wales using the 2019 Welsh Index of Multiple Deprivation (WIMD)
- 10% x the proportion of pupils of statutory school age subject to an Individual Development Plan (IDP) or with a statement of Special Educational Needs (SEN)
- 10% x the proportion of pupils of statutory school age who are either new to the English language (or Welsh where relevant), at an early acquisition stage or developing competence.

5.9 Please note that there are three schools in Caerphilly that host specialist LA provision in the form of a Special Needs Resource Base (SNRB). These are often learners from outside the school's usual catchment areas, who have complex needs, that would not be met by entering them into qualifications that contributed towards these measures. Schools with such provision are placed in the same families as schools without such provision.

5.10 For 2023 there are 6 Welsh medium families, numbered from 1 (the most disadvantaged) to 5 (the least disadvantaged). There are 15 English medium families numbered from 7 (the most disadvantaged) to 21 (the least disadvantaged).

### Families with Caerphilly Schools (2023)

Moved to a MORE disadvantaged Family (2 Schools)
Moved to a LESS disadvantaged Family (7 Schools)
6 Welsh Medium families (1-6)
14 English Medium families (7-21)

School Name	Family	Position
Ysgol Gyfun Cwm Rhymni	002	1
Ysgol Gyfun Rhydywaun		2
Ysgol Tryfan		3
Ysgol Uwchradd Bodedern		4
Ysgol Gyfun Llangefni		5
YSGOL MORGAN LLWYD		6
Ysgol Dyffryn Aman		7
Ysgol Gyfun Y Strade		8
Ysgol Bro Pedr		9
Ysgol Calon Cymru		10
Ferndale Community School	008	1
Idris Davies School 3 to 18		2
St Joseph's RC School and 6th Form Centre		3
Lliswerry High School		4
Maesteg Comprehensive School		5
Pencoedtre High School		6
PEN-Y-DRE HIGH SCHOOL		7
Ysgol Bae Baglan		8

PENTREHAFOD SCHOOL		9
Cathays High School		10
The John Frost School	009	1
Mountain Ash Comprehensive School		2
Coedcae School		3
Newport High School		4
Abersychan Comprehensive		5
HEOLDDU COMPREHENSIVE SCHOOL		6
Rhyl High School		7
Blessed Carlo Acutis Catholic School		8
Bishop Vaughan School		9
Aberdare Community School		10
St Teilo's C-in-W High School		010
Cefn Saeson Comprehensive School	2	
Cefn Hengoed	3	
Abertillery Learning Community	4	
St Julian's School	5	
Bedwas High School	6	
Cwmbran High School	7	
Ysgol Nantgwyn	8	
Brynmawr Foundation School	9	
BISHOP GORE SCHOOL	10	
St Cenydd School	011	
Ysgol Uwchradd Caergybi		2
Ebbw Fawr Learning Community		3
MORRISTON COMPREHENSIVE		4
Hawthorn High School		5
BIRCHGROVE		6
Tonyrefail Community School		7
Tredegarr Comprehensive School		8
Ysgol Cwm Brombil		9
Rhosnesni High School		10
Grango		013
Milford Haven School	2	
St Joseph's RC High School	3	
Treorchy Comprehensive School	4	
Ysgol Clywedog	5	
Blackwood Comprehensive School	6	
Lewis Girls' Comprehensive School	7	
St. David's High School	8	
St John Lloyd Catholic Comprehensive School	9	
Flint High School	10	
Ysgol Bryn Elian	014	
Bryngwyn School		2

St Martin's School		3
Ysgol Bryn Alyn		4
Lewis School Pengam		5
Cyfarthfa High School		6
Croesyceiliog School		7
Llanishen High School		8
Newbridge School		9
Ysgol Maesydderwen		10
Whitmore High School	016	1
St. Albans R.C. High School		2
Islwyn High School		3
Archbishop McGrath Catholic High School		4
Dwr Y Felin Comprehensive School		5
St Richard Gwyn Catholic High School		6
Ysgol John Bright		7
Brynteg School		8
St John Baptist CIW High School		9
Whitchurch High School		10
Prestatyn High School	017	1
Eirias High School		2
Queen Elizabeth High School		3
Afon Taf High School		4
Risca Community Comprehensive		5
King Henry VIII Comprehensive		6
Elfed High School		7
Pontarddulais Comprehensive School		8
St Joseph's Catholic and Anglican High		9
PENCOED COMPREHENSIVE	10	

- 5.11 The 1 Caerphilly Welsh medium secondary school is in family 2, the second most socio-economically disadvantaged Welsh medium family. The 11 English medium secondary schools are in families, 8, 9, 10, 11, 13, 14, 16, 17. These are 2<sup>nd</sup>, 3<sup>rd</sup>, 4<sup>th</sup>, 5<sup>th</sup>, 7<sup>th</sup>, 8<sup>th</sup>, 10<sup>th</sup> and 11<sup>th</sup> most disadvantaged families, of the 15 English medium families.

### Outcomes - Capped 9 – all pupils – compared with the family average

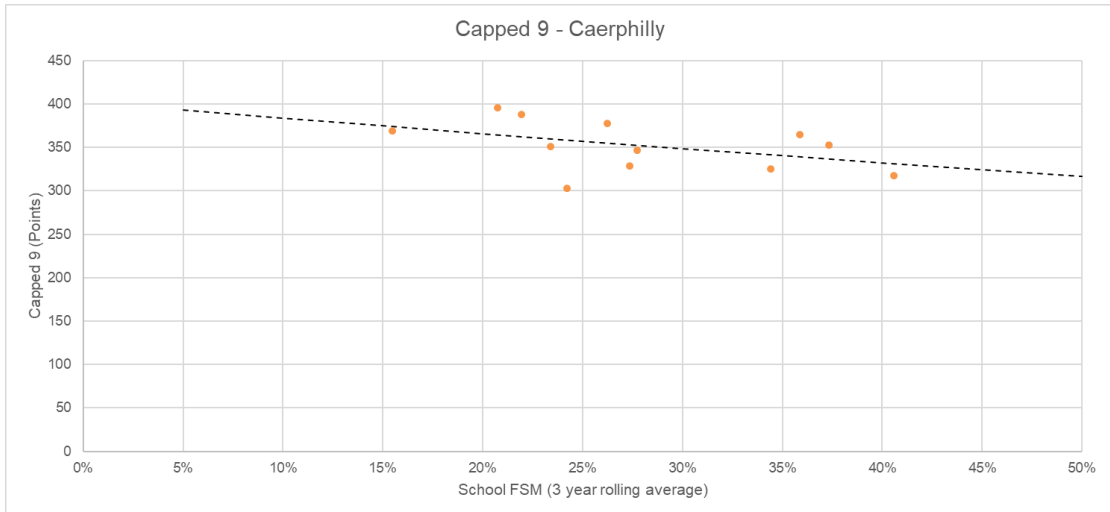
- 5.12 The table below shows the Capped 9 performance of all learners in each school compared with their individual family of schools. Six schools are above their family, and six below.

School Name	Capped 9	Family Capped 9	Capped 9 - School-Family difference
Caerphilly School	395.7	372.6	23.2
Caerphilly School	387.5	372.6	14.9
Caerphilly School	364.3	353.4	10.9
Caerphilly School	368.9	358.6	10.3
Caerphilly School	377.2	372.6	4.6
Caerphilly School	352.3	349.1	3.2
Caerphilly School	347.0	349.3	-2.3
Caerphilly School	317.3	331.5	-14.2
Caerphilly School	328.7	349.3	-20.6
Caerphilly School	351.0	376.0	-25.0
Caerphilly School	325.3	353.8	-28.5
Caerphilly School	303.1	362.4	-59.3

- 5.13 For all GCSE subjects the points difference between every grade is 6 points. So, for example a B is worth 6 more points than a C.
- 5.14 This means that for the Capped 9, a difference of 54 points indicates that on average, every learner in a school is performing above or below the family by a whole GCSE grade in every subject. (6 points x 9 subjects=54 points).
- 5.15 This means that for the best performing Caerphilly secondary school (adjusted for socio-economic disadvantage) every learner on average achieved approximately half a GCSE grade higher than the family average. For the lowest performing school (adjusted for socio-economic disadvantage), it is slightly over one grade lower on average for every learner.
- 5.16 Please note that the indicative bars on the right for this table and all below are adjusted to the minimum (negative) and maximum (positive) values for each table individually and automatically. Therefore, for example a bar '47.6 points' long will not be consistent across each chart.

### **Capped 9 – all pupils – compared with WG ‘Modelled Outcome’ line**

- 5.17 The chart below does not compare with the family, but rather the Welsh Government ‘Modelled outcome’. Each dot represents a Caerphilly secondary school, ordered by % FSM learners.



5.18 Five schools are above the modelled outcome line and two below, 7 are below, but of these 3 are very close to the modelled outcome line.

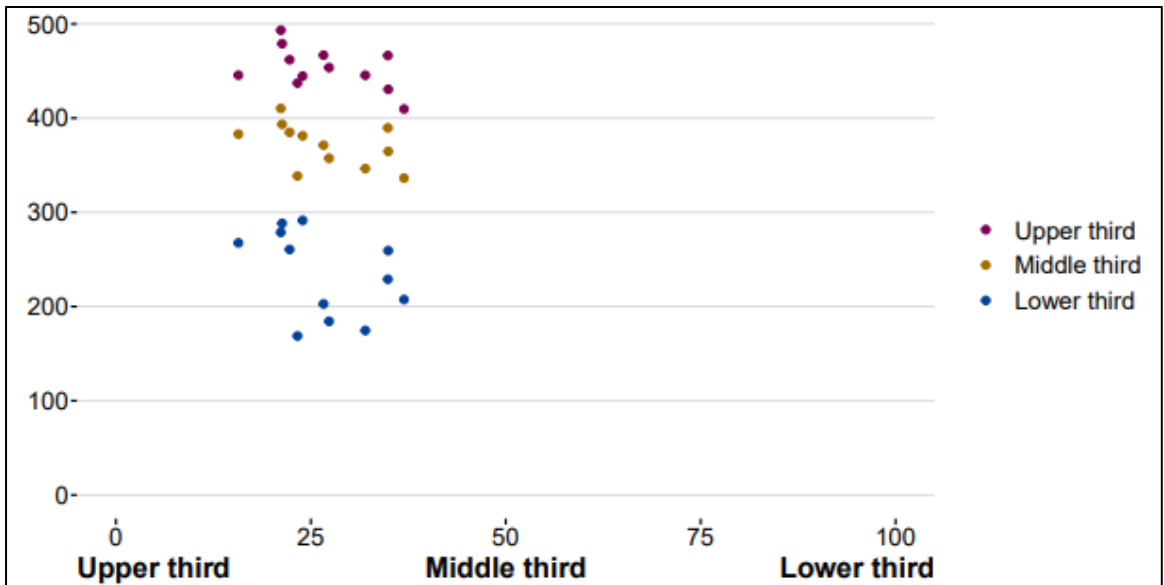
**Capped 9 – Comparison by ‘Thirds’ with WG ‘Modelled Outcome’ line**

5.19 The chart below groups learners in each individual school into ‘thirds’. For example, if 120 learners in a cohort, they would be split into three groups of 40 by their Capped 9 scores. Three averages would then be calculated for each of these groups. The table below gives the average of each third.

School Name	Upper Third			Middle Third			Lower Third		
	Achiev	Modell	+/-	Achiev	Modell	+/-	Achiev	Modell	+/-
Caerphilly School	493	455	38	410	380	30	279	254	25
Caerphilly School	466	437	29	390	363	26	229	225	4
Caerphilly School	479	455	24	393	380	13	288	254	35
Caerphilly School	467	448	19	371	373	-2	203	242	-39
Caerphilly School	462	454	8	385	379	6	261	252	9
Caerphilly School	454	447	7	357	373	-15	184	241	-56
Caerphilly School	446	441	5	346	367	-20	175	231	-56
Caerphilly School	431	437	-6	365	363	2	259	225	35
Caerphilly School	445	452	-7	381	377	4	291	248	43
Caerphilly School	437	453	-15	339	378	-39	169	249	-80
Caerphilly School	446	463	-17	383	387	-4	268	267	1
Caerphilly School	410	434	-25	336	361	-25	207	221	-13

5.20 Please note the above table has been ordered by the highest performing third. For this third, seven schools are above expectation, and five below. For the middle third six schools are above and six below. For the lowest third again, six are above and six below. There are however 3 schools where outcomes are significantly lower than the model for the lowest performing, with learners in those three schools the equivalent of approximately a grade lower for each of the 9 qualifications that the model

5.21 The same data is represented as a scatter chart based on FSM eligibility. This shows the relatively low level of variance for Caerphilly schools in the outcomes for each school in the upper and middle thirds, but the high level of variability in the lowest third.



### Literacy Measure – compared with the Family average

5.22 To put all these charts in perspective a difference of +/- 6 points is the equivalent of a GCSE grade difference for every learner. +/- 3 points would therefore be a half a grade difference.

School Name	Literacy Measure	Literacy Measure - Family	Literacy Measure - Difference
Caerphilly School	39.6	37.6	2.0
Caerphilly School	42.9	41.0	1.9
Caerphilly School	40.4	38.9	1.5
Caerphilly School	42.5	41.1	1.4
Caerphilly School	41.8	41.0	0.8
Caerphilly School	37.9	38.3	-0.4
Caerphilly School	37.7	38.9	-1.1
Caerphilly School	36.9	38.2	-1.3
Caerphilly School	38.0	41.0	-3.0
Caerphilly School	36.7	40.1	-3.4
Caerphilly School	38.2	41.7	-3.5
Caerphilly School	31.3	36.0	-4.8

5.23 Five schools are above the family average for the literacy measure, with seven schools below, with four of these being below by more than half a GCSE grade per learner.

5.24 The table below gives the individual contribution of each of the GCSEs that contribute to this measure. They are in the same order as the table above. Welsh language has not been included as this would identify the school.

School Name	English Language	English Literature



Caerphilly School	35.7	37.7
Caerphilly School	39.6	42.5
Caerphilly School	38.9	37.8
Caerphilly School	40.6	39.1
Caerphilly School	38.7	44.6
Caerphilly School	35.6	37.3
Caerphilly School	34.9	36.1
Caerphilly School	34.7	37.0
Caerphilly School	35.8	36.2
Caerphilly School	34.6	38.4
Caerphilly School	36.2	41.9
Caerphilly School	29.7	29.2

5.25 Nine schools have a higher contribution made by literature rather than language.

### Numeracy Measure – compared with the Family average

School Name	Numeracy Measure	Numeracy Measure - Family	Numeracy Measure - Difference
Caerphilly School	38.4	35.4	3.0
Caerphilly School	33.5	30.8	2.7
Caerphilly School	37.9	35.4	2.5
Caerphilly School	36.1	34.7	1.4
Caerphilly School	34.6	33.7	0.9
Caerphilly School	31.4	31.1	0.4
Caerphilly School	32.2	32.4	-0.2
Caerphilly School	32.7	33.7	-1.0
Caerphilly School	33.9	35.4	-1.4
Caerphilly School	26.6	28.4	-1.9
Caerphilly School	32.6	36.9	-4.2
Caerphilly School	29.7	36.3	-6.6

5.26 For the numeracy measure six schools are above the family average (with three by approximately half a grade per learner). Six schools are below the family average, with one of these by more than half a grade per learner, and one by slightly over a whole grade per learner.

5.27 The differences between the individual numeracy GCSE and mathematics GCSE are relatively small for each school, except for the 11<sup>th</sup> school in this list, where numeracy is more than half a grade higher per learner than mathematics.

School Name	Numeracy	Mathematics
Caerphilly School	38.4	37.6
Caerphilly School	33.5	34.0
Caerphilly School	37.9	37.4
Caerphilly School	36.1	37.2

Caerphilly School	34.6	35.0
Caerphilly School	31.4	31.5
Caerphilly School	32.2	28.6
Caerphilly School	32.7	32.7
Caerphilly School	33.9	35.9
Caerphilly School	26.6	26.8
Caerphilly School	32.6	35.7
Caerphilly School	29.7	30.4

### Science Measure – compared with the Family average

School Name	Science Measure	Science Measure - Family	Science Measure - Difference
Caerphilly School	38.9	36.0	2.9
Caerphilly School	38.3	35.9	2.5
Caerphilly School	39.2	36.7	2.5
Caerphilly School	38.6	36.7	1.9
Caerphilly School	34.9	33.7	1.2
Caerphilly School	35.8	35.1	0.7
Caerphilly School	37.7	38.2	-0.5
Caerphilly School	37.0	40.3	-3.4
Caerphilly School	32.9	36.7	-3.8
Caerphilly School	31.9	35.9	-4.0
Caerphilly School	33.5	38.3	-4.8
Caerphilly School	24.6	30.2	-5.6

5.28 Six schools are above the family and six below. It is science which has the greatest variance between schools. There are three schools approximately half a GCSE grade per learner above the family, and five below.

### Welsh Baccalaureate Measure – compared with the Family average

5.29 It is this measure which has the greatest variance across Wales, with some family averages particularly low.

School Name	Welsh Bacc. Measure	Welsh Bacc. Measure - Family	Welsh Bacc. Measure - Difference
Caerphilly School	39.0	27.1	11.9
Caerphilly School	44.4	32.7	11.7
Caerphilly School	40.5	32.7	7.8
Caerphilly School	38.3	30.6	7.7
Caerphilly School	37.8	30.6	7.2
Caerphilly School	41.5	35.2	6.3
Caerphilly School	34.1	29.9	4.2
Caerphilly School	30.7	27.4	3.2
Caerphilly School	35.4	36.1	-0.7
Caerphilly School	32.2	37.8	-5.6
Caerphilly School	0.0	25.5	-25.5
Caerphilly School	0.0	32.7	-32.7

5.30 Two schools in Caerphilly did not enter learners in this area. For the remaining schools, nearly all others are above the family averages.

**No Qualifications – compared with the Family average**

5.31 Please note the reversed colour coding on the bars to indicate that a negative difference from the family is positive.

School Name	No Qualifications (%)	No Qualificaitons (%) Family	No Qualificaitons (%) Difference
Caerphilly School	0.0	0.9	-0.9
Caerphilly School	0.0	0.4	-0.4
Caerphilly School	0.0	0.3	-0.3
Caerphilly School	0.0	0.1	-0.1
Caerphilly School	0.0	0.1	-0.1
Caerphilly School	0.0	0.1	-0.1
Caerphilly School	0.0	0.1	-0.1
Caerphilly School	0.0	0.0	0.0
Caerphilly School	0.8	0.4	0.4
Caerphilly School	1.1	0.1	1.0
Caerphilly School	3.7	0.6	3.1
Caerphilly School	5.5	0.8	4.7

5.32 There are 8 schools that have no learners leaving without a qualification. Four schools have higher proportions of learners leaving without a qualification than their family averages, three significantly so.

**5+ A\*-A – compared with the Family average**

School Name	5+ A*-A (%)	5+ A*-A (%) Family	5+ A*-A (%) Difference
Caerphilly School	31.5	20.5	11.1
Caerphilly School	23.8	17.3	6.5
Caerphilly School	25.8	20.5	5.3
Caerphilly School	16.1	13.5	2.6
Caerphilly School	18.1	17.3	0.8
Caerphilly School	12.7	15.0	-2.2
Caerphilly School	16.2	19.0	-2.8
Caerphilly School	9.2	12.4	-3.3
Caerphilly School	19.5	24.8	-5.3
Caerphilly School	13.6	20.5	-6.9
Caerphilly School	3.1	10.6	-7.4
Caerphilly School	12.7	21.2	-8.5

- 5.33 Seven schools 5+ A\*-A percentage are below their family averages with five above. One school's rate is significantly higher than that of the family, however there are four schools with rates significantly lower. This will be linked to the relative performance of the Upper Third of learners on the capped 9 for these schools.

#### Local Authority Aggregate Data

#### Key measures – Compared with Wales

- 5.34 Please note that these measures are not contextualised but compare with the Wales average.

**Table 1.1c - Qualifications outcomes**

Title	2023 - Caerphilly	2023 - Wales
Capped 9 points score (interim)	346.1	358.1
WBacc Skills Challenge Certificate indicator – points score	31.5	31.6
Literacy indicator – points score	38.4	39.7
Numeracy indicator – points score	35.4	37.1
Science indicator – points score	34.7	36.9
No qualifications - % of pupils	1.8	1.4
5+ A*-A or equivalent	17.1	20.3

- 5.35 For nearly all measures the Caerphilly is below the Wales average, however this is to be expected given the socio-economic context of learners in Caerphilly schools.

#### Key measures – Compared with 'Modelled' by FSM

- 5.36 Modelled expectations for each indicator are slightly below expectation as indicated by Free School Meals, except for the Skills Challenge Certificate Indicator. Please note that each table number is from the original data pack, not this report.

Title	2023 - Capped 9 points score (interim)	2023 - Modelled score	2023 - Difference
Caerphilly	353.6	358.9	-5.3

- 5.37 The Capped 9 score above is 5.3 points below the modelled expectation. This is the equivalent of approximately 1/10th of a GCSE grade per learner.

<b>Table 4.2 - KS4 WBacc Skills Challenge Certificate indicator - points score - LA Average</b>			
Title	2023 - WBacc Skills Challenge Certificate indicator – points score	2023 - Modelled score	2023 - Difference
Caerphilly	32.4	28.9	3.4

- 5.38 The Skills Challenge Certificate score is above expectation, by the equivalent of half a GCSE grade per learner.

<b>Table 4.3 - KS4 Literacy indicator - points score - LA Average</b>			
Title	2023 - Literacy indicator – points score	2023 - Modelled score	2023 - Difference
Caerphilly	39.1	39.4	-0.3

- 5.39 The literacy score is slightly below expectation, the equivalent of approximately 1/20th of a GCSE grade per learner.

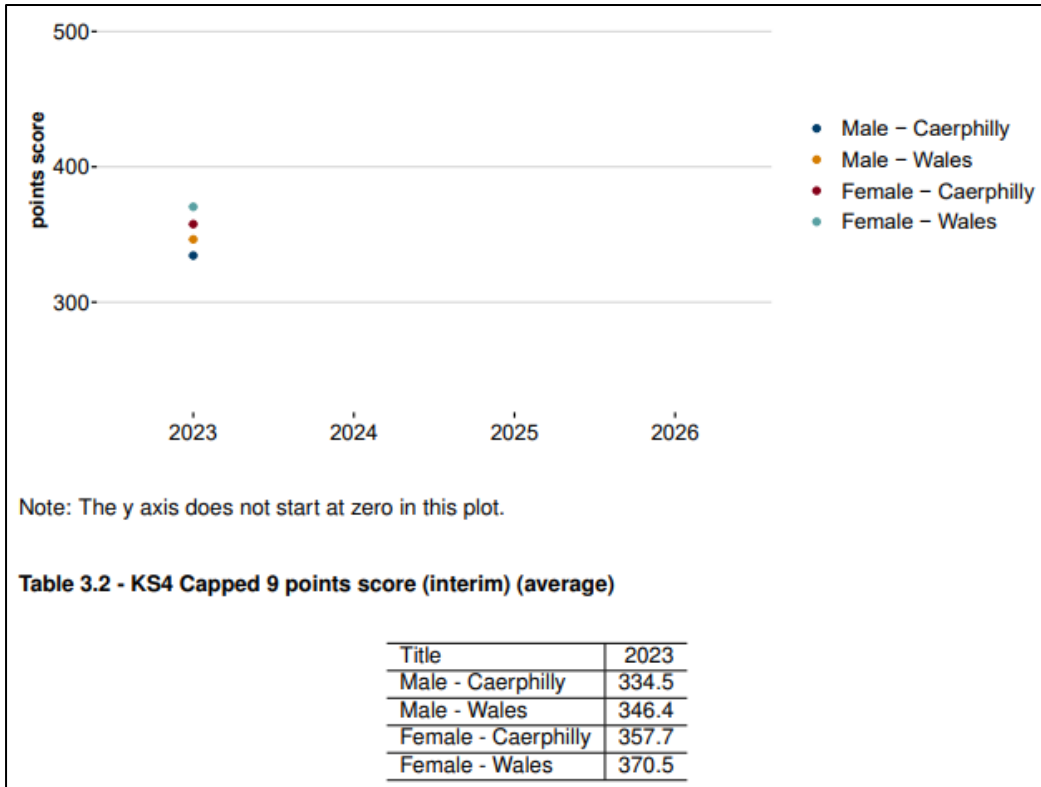
<b>Table 4.4 - KS4 Numeracy indicator - points score - LA Average</b>			
Title	2023 - Numeracy indicator – points score	2023 - Modelled score	2023 - Difference
Caerphilly	36.1	36.5	-0.4

- 5.40 The numeracy score is slightly below expectation, the equivalent of 1/15th of a GCSE grade per learner.

<b>Table 4.5 - KS4 Science indicator - points score - LA Average</b>			
Title	2023 - Science indicator – points score	2023 - Modelled score	2023 - Difference
Caerphilly	35.6	36.1	-0.5

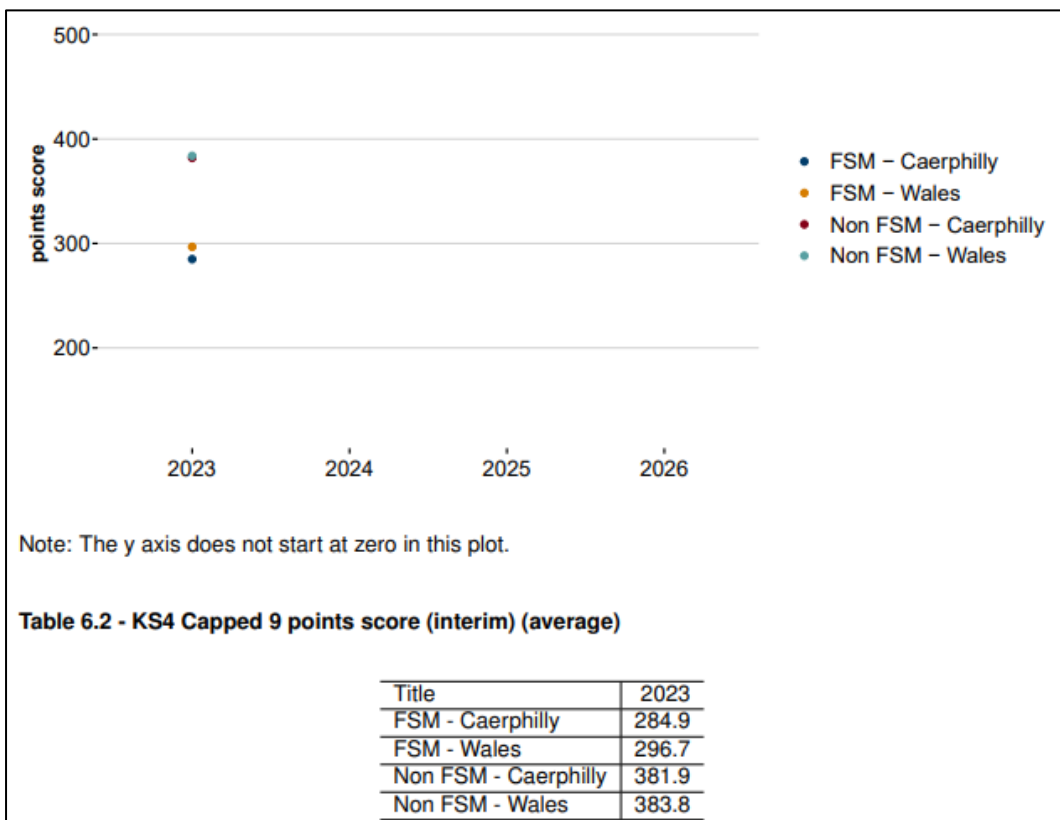
- 5.41 The science score is very slightly below expectation, the equivalent of 1/12th of a GCSE grade per learner.

### **Capped 9 – Males and Females**



5.42 Both males and females in Caerphilly perform less well than their peers in Wales. The difference between the two groups of learners is approximately the same.

**Capped 9 FSM – non-FSM**



5.43 Non-FSM learners in Caerphilly perform as well as their peers across Wales. FSM learners however perform less well than their peers across Wales.

## **6. ASSUMPTIONS**

6.1. There are no specific assumptions.

## **7. SUMMARY OF INTEGRATED IMPACT ASSESSMENT**

7.1 This report is for information only, therefore no Integrated Impact Assessment is required.

## **8. FINANCIAL IMPLICATIONS**

8.1 There are no specific financial implications

## **9. PERSONNEL IMPLICATIONS**

9.1 There are no personnel implications.

## **10. CONSULTATIONS**

10.1 All responses from the consultations have been incorporated in the report.

## **11. STATUTORY POWER**

11.1 Local Government Acts 1972 and 2000, Children's Act 2004, Standards and Framework Act 1998

Author: Debbie Hartevelde, Managing Director, Education Achievement Service

Consultees: Richard Edmunds, Corporate Director of Education and Corporate Services  
Dave Street, Deputy Chief Executive  
Councillor Carol Andrews, Cabinet Member for Education and Communities  
Councillor Teresa Parry, Chair of Education and Social Services Scrutiny Committee  
Councillor Brenda Miles, Vice Chair of Education and Social Services Scrutiny Committee  
Steve Harris, Head of Financial Services and S151 Officer  
Keri Cole, Chief Education Officer  
Sue Richards, Head of Transformation and Education Planning and Strategy  
Sarah Ellis, Lead for Inclusion and ALN  
Sarah Mutch, Early Years Manager  
Paul Warren, Strategic Lead for School Improvement  
Jane Southcombe, Financial Services Manager  
Lynne Donovan, Head of People Services  
Rob Tranter, Head of Legal Service and Monitoring Officer  
Ros Roberts, Business Improvement Officer.